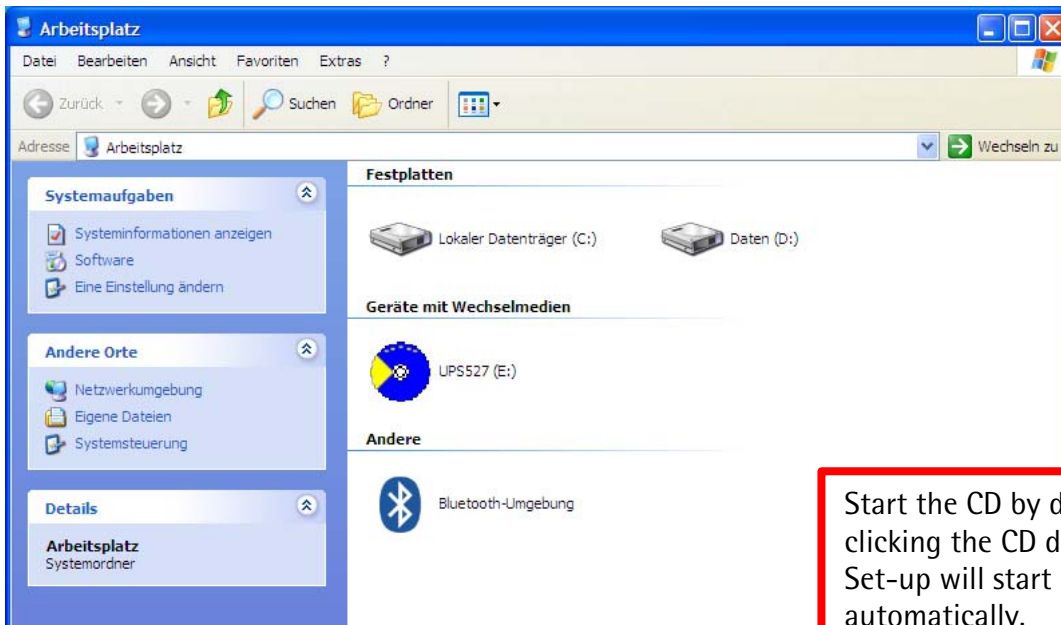


Quickstart manual

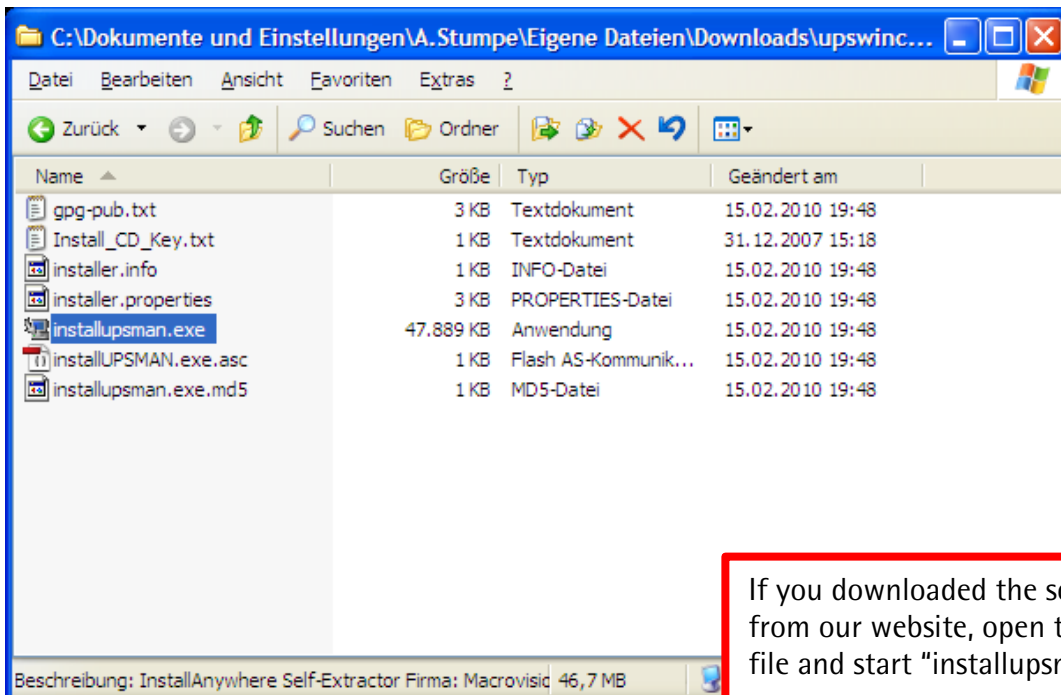
# CompuWatch

for Windows

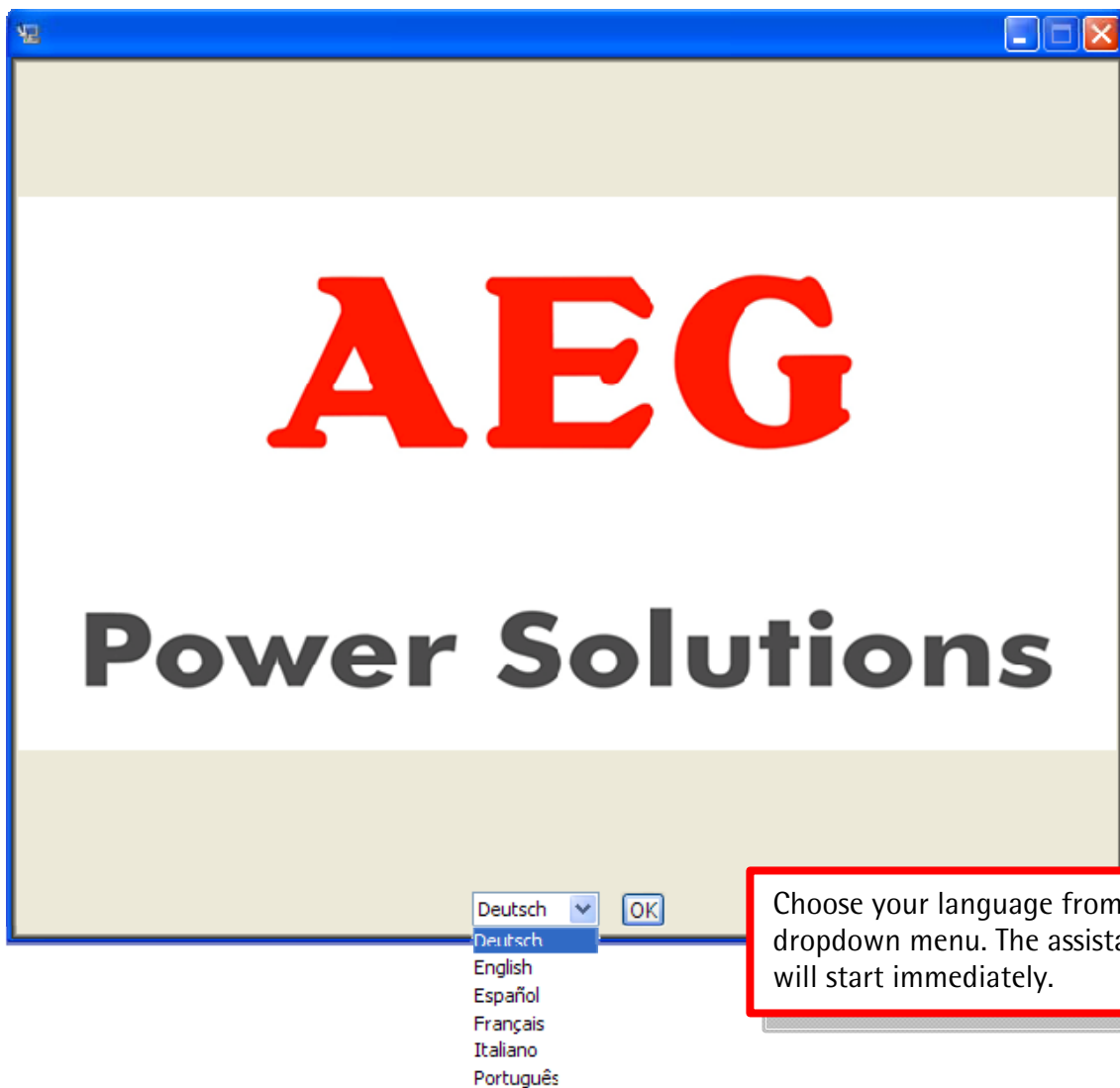
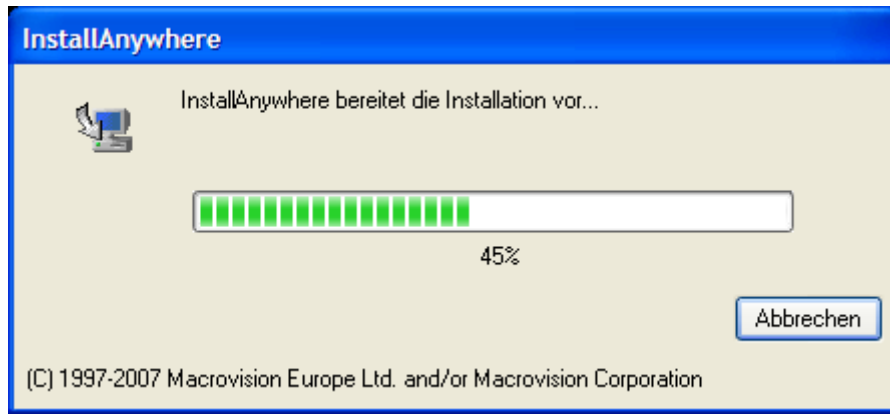
## Step 1: Start-up



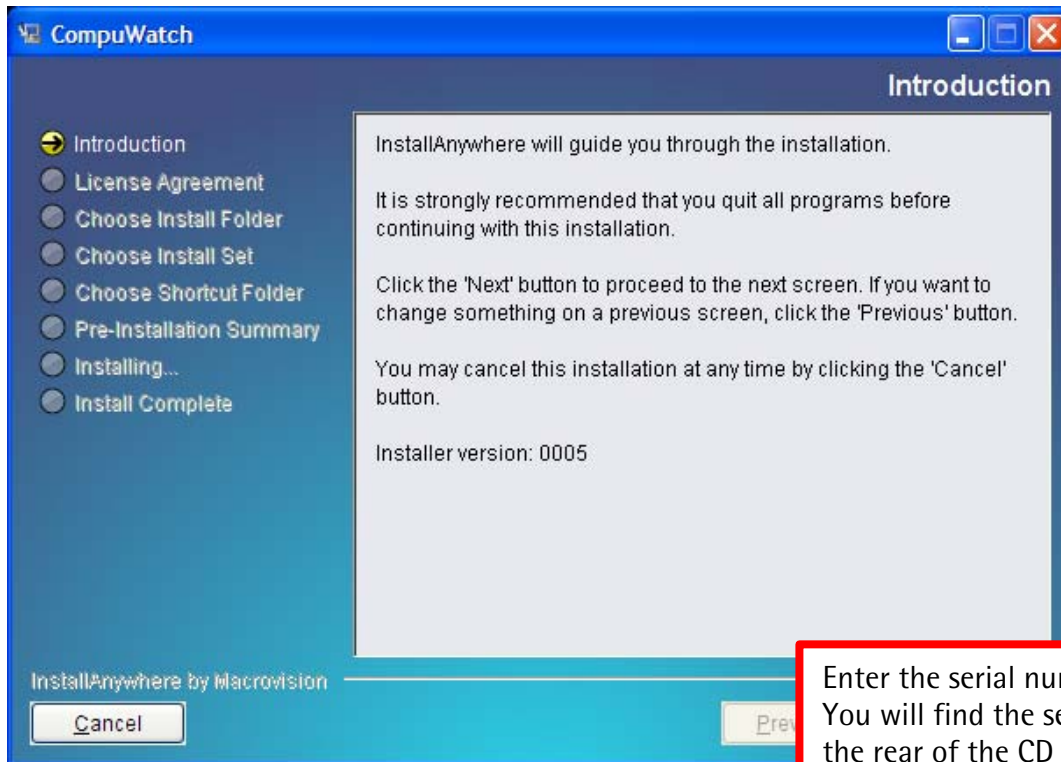
Start the CD by double clicking the CD drive. Set-up will start automatically.



If you downloaded the software from our website, open the ZIP file and start "installupsman.exe".



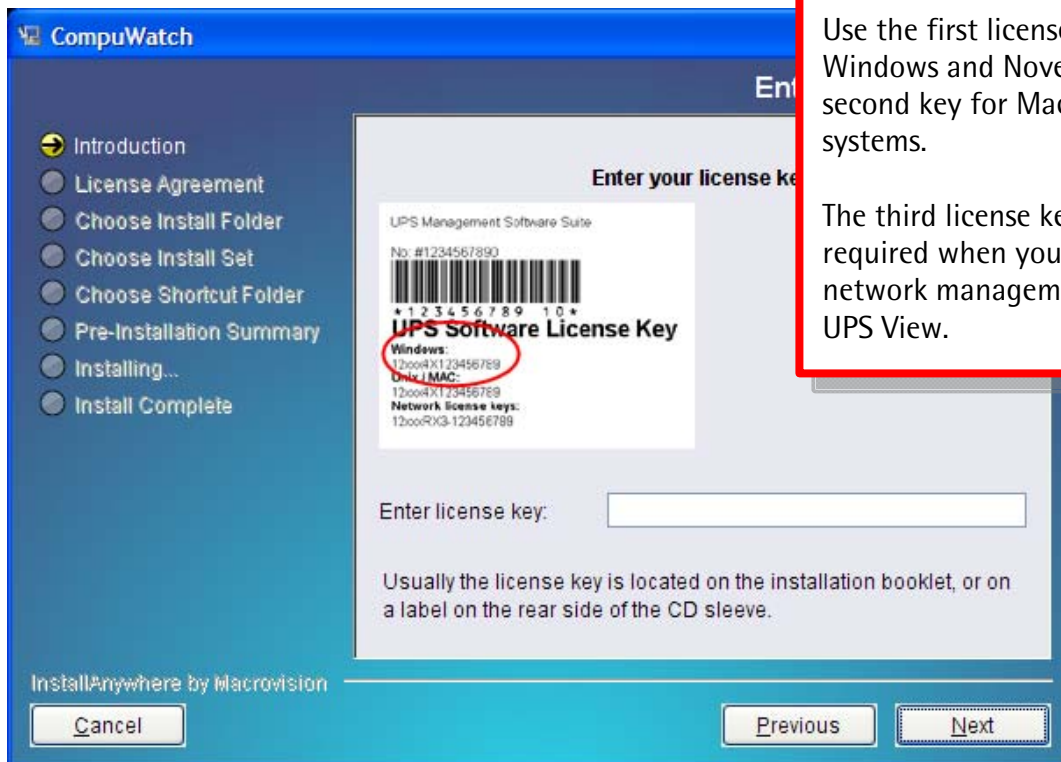
## Step 2: Installation

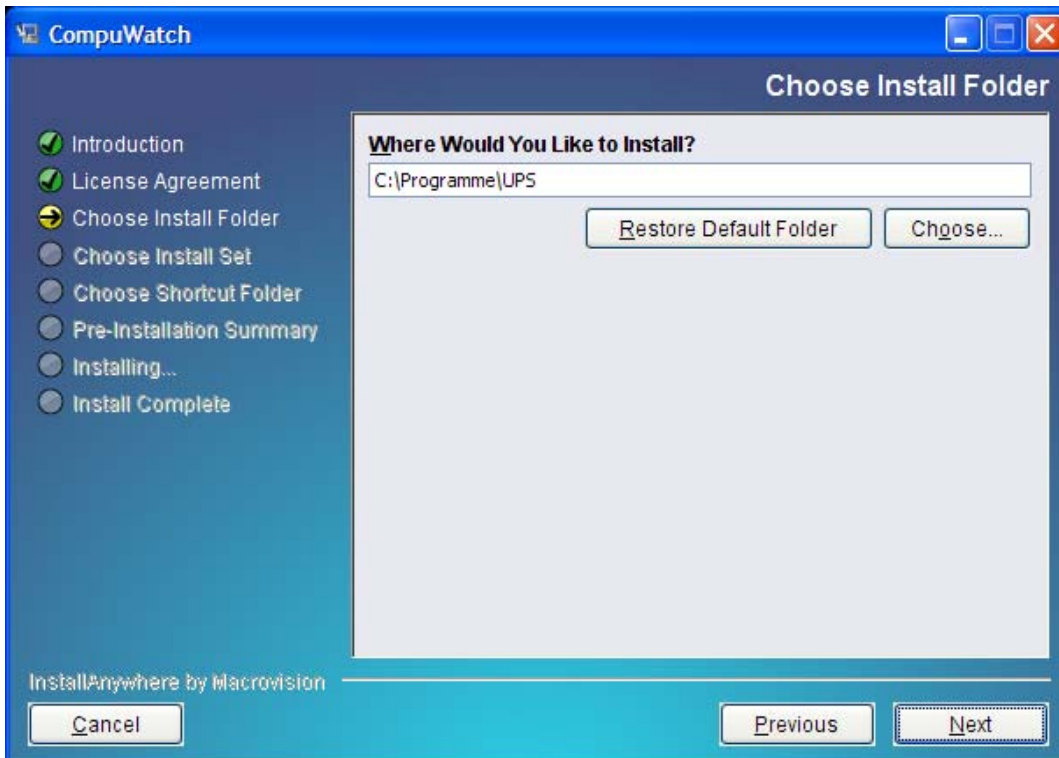
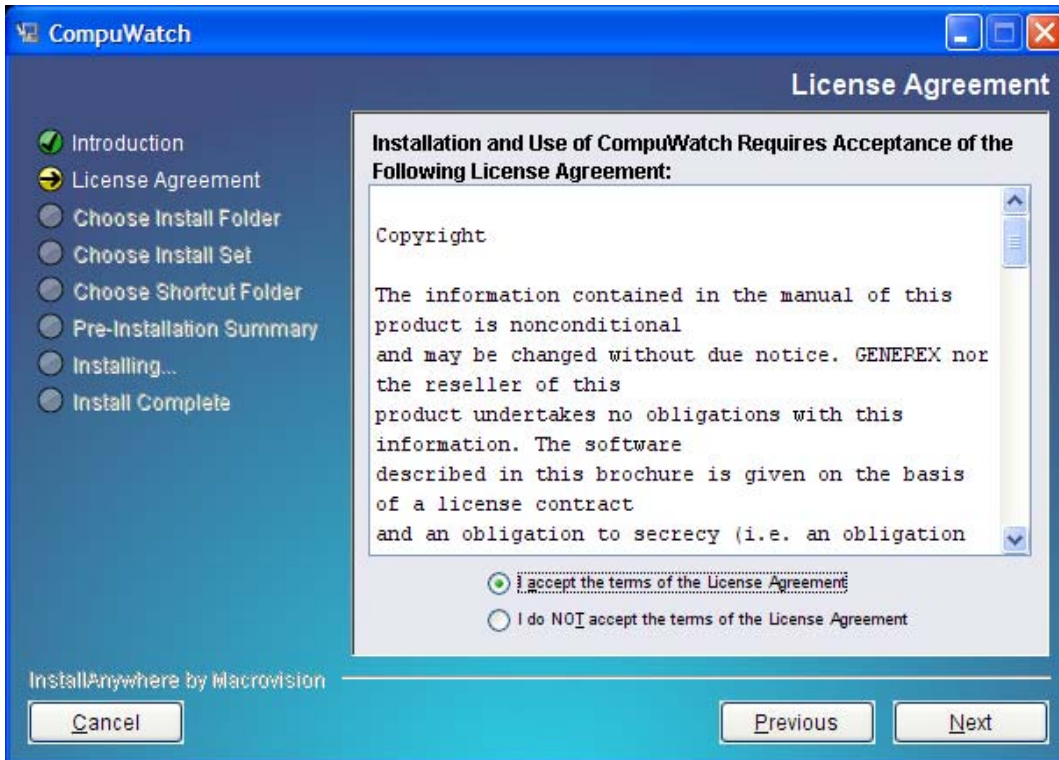


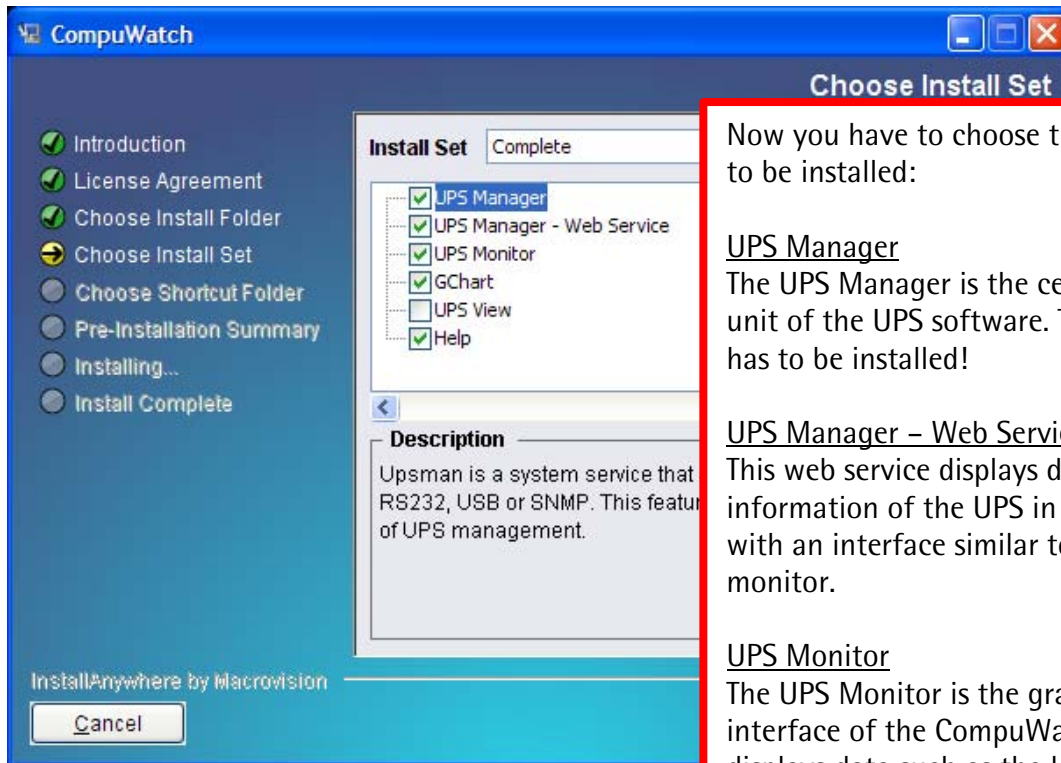
Enter the serial number in the box. You will find the serial number at the rear of the CD sleeve or in the downloaded ZIP file.

Use the first license key for Windows and Novell OS and the second key for Mac OS or UNIX systems.

The third license key below is required when you install the network management software UPS View.







Now you have to choose the components to be installed:

UPS Manager

The UPS Manager is the central control unit of the UPS software. This component has to be installed!

UPS Manager – Web Service

This web service displays data and status information of the UPS in the web browser with an interface similar to the UPS monitor.

UPS Monitor

The UPS Monitor is the graphic user interface of the CompuWatch software. It displays data such as the load or calculated autonomy time.

GChart

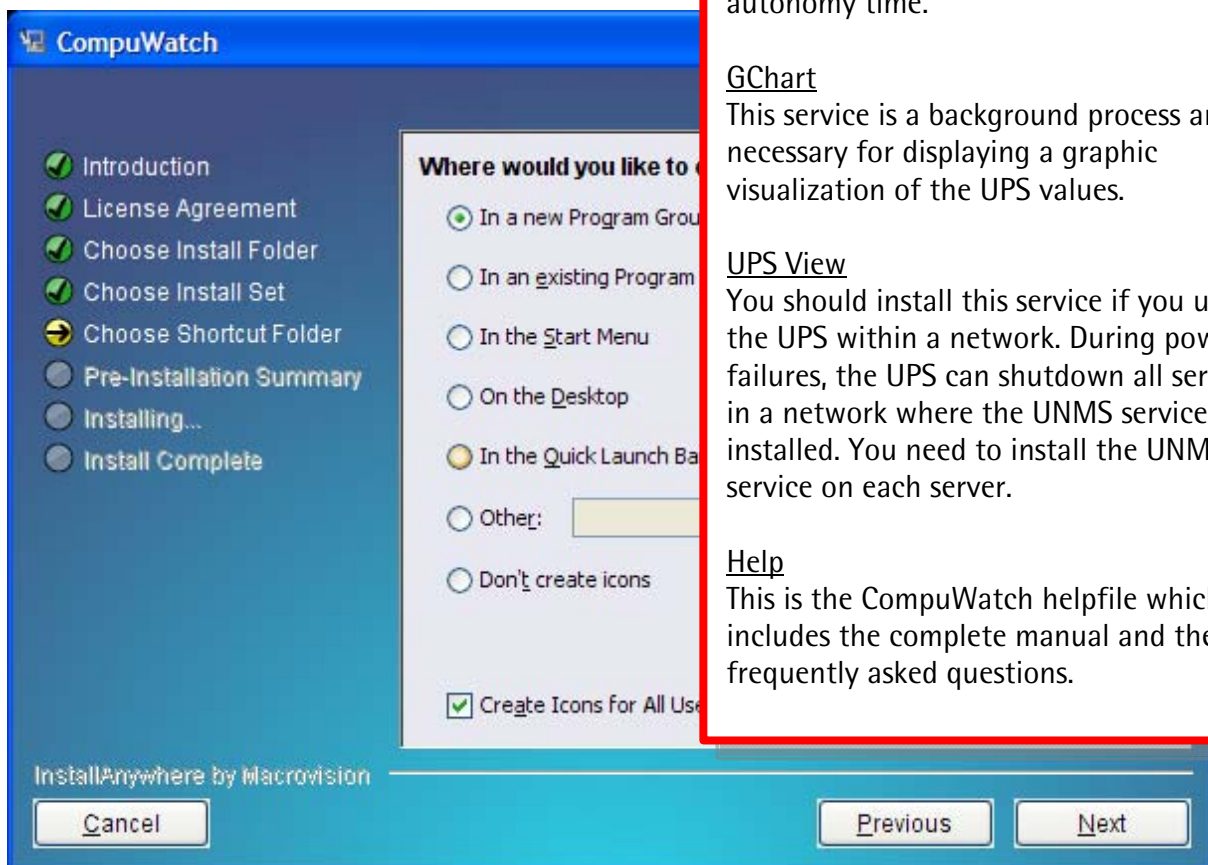
This service is a background process and is necessary for displaying a graphic visualization of the UPS values.

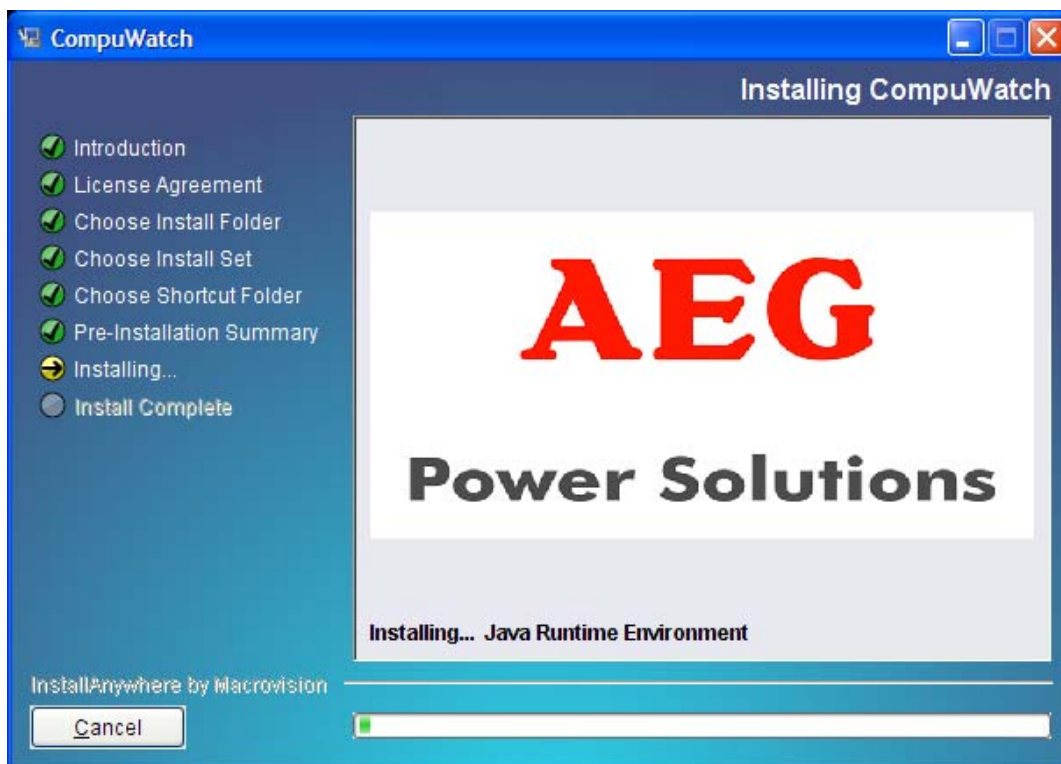
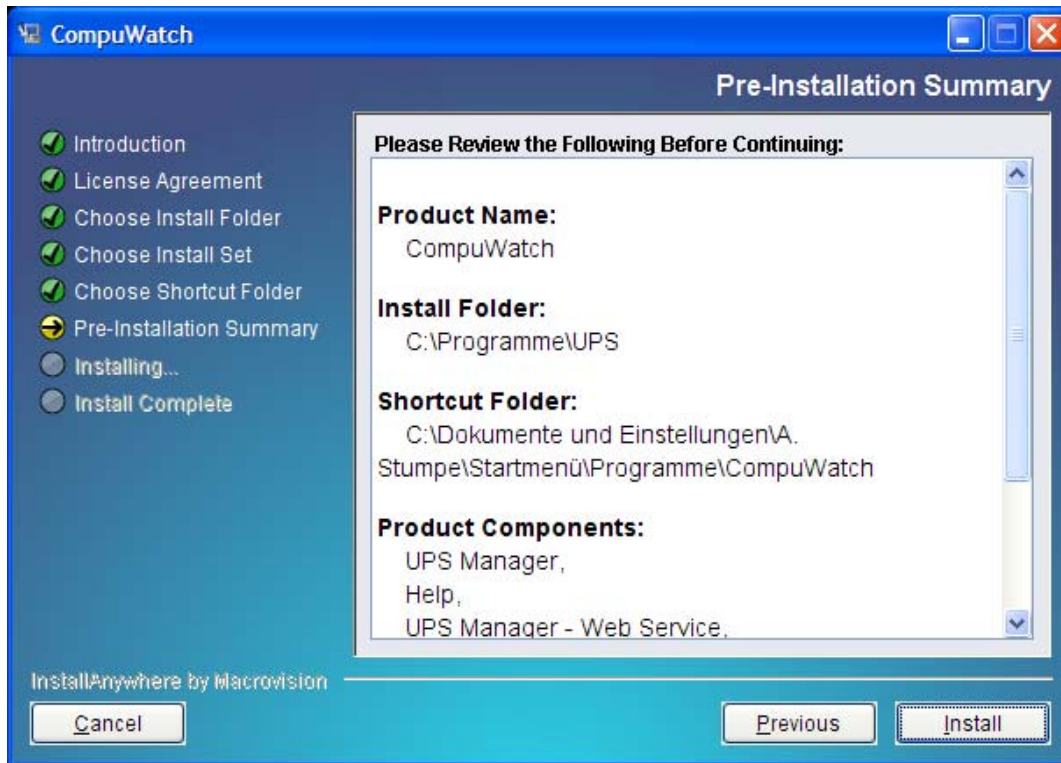
UPS View

You should install this service if you use the UPS within a network. During power failures, the UPS can shutdown all servers in a network where the UNMS service is installed. You need to install the UNMS service on each server.

Help

This is the CompuWatch helpfile which includes the complete manual and the frequently asked questions.

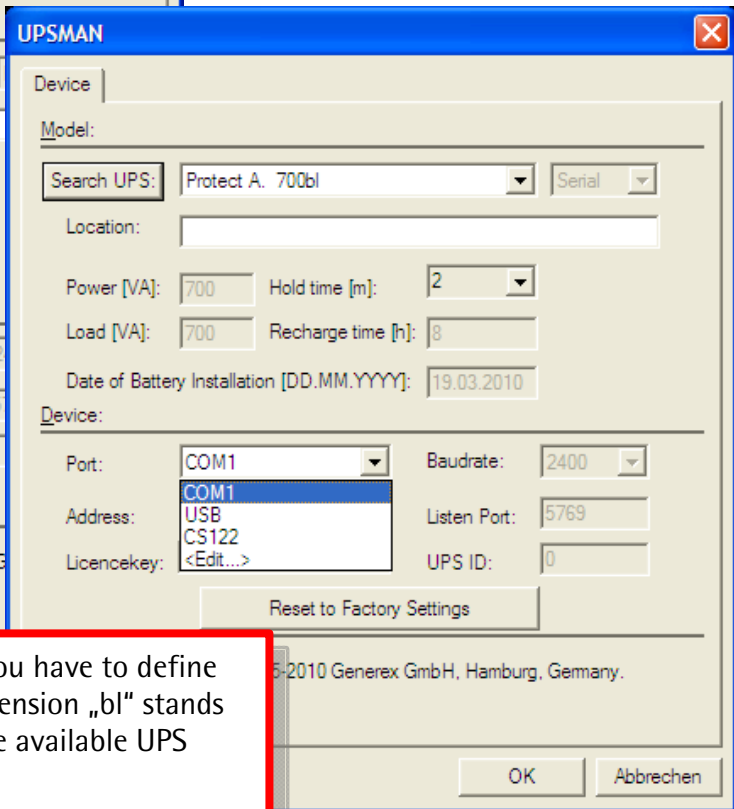
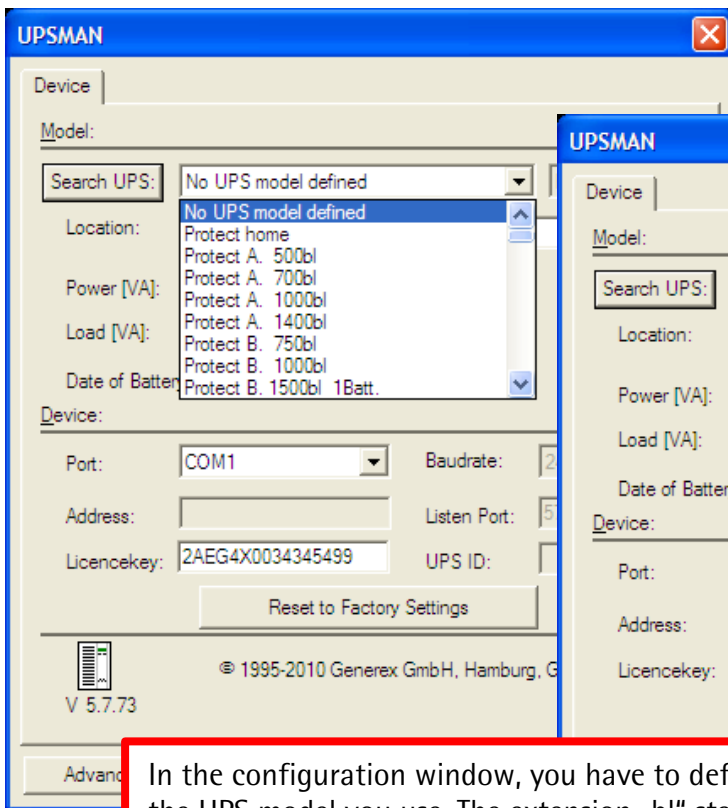




**Step 3:** Configuration

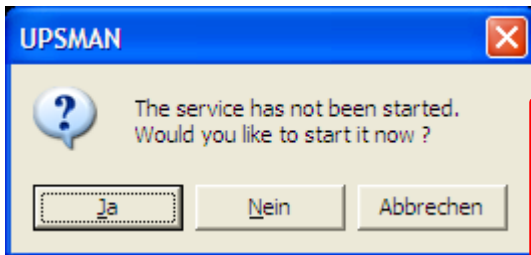


The windows firewall blocks the necessary communication port by default. You have to unlock the port to connect the computer with the UPS.



In the configuration window, you have to define the UPS model you use. The extension „bl“ stands for „blackline“ and describes the available UPS series.

After defining the UPS model, you can choose the connection between UPS and computer.



Now you must define the network that the UPS is connected to. If it's a point-to-point connection from UPS to computer, select "Local UPSMAN...". If the computer is integrated in a network, choose „Network UPSMAN...“. If the UPS is directly connected to the network via an SNMP adapter, click on „UPSMAN via SNMP“.

